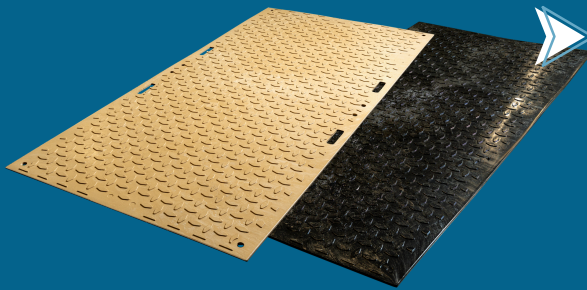


Industrial Composite Mat



Durable, Lightweight, & Affordable

➤ PolyStamp's Industrial Composite Mat is durable and lightweight, perfect for ground protection in construction and environmental projects.



➤ It supports heavy loads while safeguarding delicate surfaces, preventing ground damage for a safer working environment.

➤ Our recycling formula and innovative business model deliver high-quality, cost-effective solutions.



Tan



Black

Product Features

- ✓ Weight Cap: 120k lbs.
- ✓ PP
- ✓ Reversible



Custom Colors
4' x 8' x 1/2"



Black
4' x 8' x 1/2"



Suitable For:

Construction & Trades

Agriculture & Farming

Logistics & Warehousing

Transportation & Railways

Utilities & Maintenance

Outdoor Recreation

Event Management

Mining & Quarrying

Forestry & Land Management

Waste Management

Emergency & Disaster Response



www.poly-stamp.com



904-775-8339



info@poly-stamp.com

Industrial Composite Mat



Why Choose PolyStamp's Industrial Composite Mats?

PolyStamp's Industrial Composite Mats offer an outstanding combination of durability, lightweight performance, and affordability, making them the ideal ground protection solution for various construction projects and environmentally sensitive job sites.

Weighing only 85 lbs., these mats are made from Polypropylene (PP), which is non-toxic and chemically inert, ensuring their safety in sensitive environments. Designed to support loads of up to 60 tons (120,000 lbs.), depending on ground conditions, these mats provide robust support while protecting delicate surfaces beneath them.

The dual-sided design features pedestrian treads on one side and heavy machinery treads on the other,

making them versatile for use with large equipment such as drilling rigs, cranes, and excavators. With added UV protection and static dissipative properties, these mats enhance safety and promise longevity, boasting a field life of up to 10 years.

Forged from post-industrial and post-consumer waste, PolyStamp's innovative recycling formula and cutting-edge technology enable us to provide high-performing, budget-friendly solutions that enhance your worksite with strength, safety, and sustainability. Ensure a more efficient working environment and protect your ground surfaces with PolyStamp's reliable mats.

Enhanced Equipment

Provides Environmental Protection

Even Weight Distribution

Heavy Machinery Buffer

Easy Manual Installation

Raised Tread Traction



Protection for Natural Ground and Turf from Rutting:

Construction Sites

Helicopter Landings

Laydown Yards

Staging Areas

Temporary Access Roads

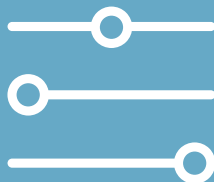
Golf Courses



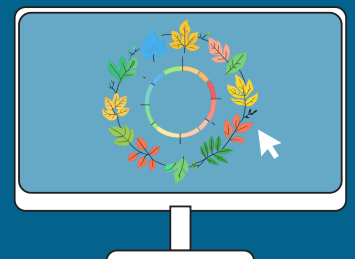
Optional Customizations

✓ **Logo Embossing**

✓ **2-Way or 4-Way Connectors**



Custom Colors



www.poly-stamp.com



904-775-8339



info@poly-stamp.com